

LETTERS KINGDOM

---

Welcome to the Fantasy Land of Characters

# User Guide

CORPORATE GRAPHICS AND COMMUNICATIONS

# Techno-Valley Inc.

---

© Techno Valley Inc.  
Alexandria - Egypt  
Phone: +20 10 160 49 68

---

# Table of Contents

Introduction	i
C H A P T E R 1	
Installing the Game	1
Starting the Game	2
Registering the Game	2
Uninstalling the Game	3
C H A P T E R 2	
Getting Started	4
Playing the Game	4
Controls Reference	5
Saving and Loading	5
C H A P T E R 3	
Technical Support	7
Supported Graphics Adapters	7
DirectX Important Notes	7

---

## INTRODUCTION

---

*Welcome to the fantasy world of characters. You will play in the fantasy land of characters start searching for the alphabetical English letters from a to z. You can play it alone or with you children or your younger brothers or sisters. Starts now to learn and have fun in a new way.*

---

## Installing the game

*Like any other application just follow the next instructions*

**S**tart installing the game by putting the CD in the convenient CD-ROM drive. If you have the Autorun feature enabled on your machine the following interface will appear in front of you. You can choose either to install the demo, the full version, update your current directX version or to quit this installation interface.

You have simply to use your mouse as well as simple left button to click the button.



If this installation interface didn't load automatically, this indicates that you don't have the Autorun feature enabled on your PC.

Open my computer right click your CD-ROM drive icon. Double click the installation application file named "lk-autorun.exe" this interface will launch directly.

## Starting the game

*Like any other application just follow the next instructions*

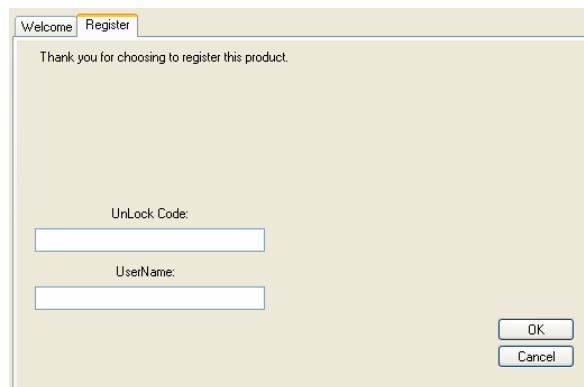
**T**o start the application click on windows start button and then choose All Programs then choose Letters Kingdom and finally choose the executable letters kingdom.

Now you will have to move to the next step, the registration step.

## Registering the game

*In this section we will describe how to register the game.*

**A**fter you run the game for the first time a window will appear asking you to enter you to register the game. You will have then to send us the registration number that appears on your screen and then enter the information you will receive when we reply to you. [REGISTRATION NUMBER FORMAT: XXXX-XXXX]



Thank you for choosing to register this product.

UnLock Code:

UserName:

OK  
Cancel

If you have any trouble you can contact [support@letterskingdom.com](mailto:support@letterskingdom.com)

Under the tab register you will enter you username you've chosen before as well as your unlock code we've provided to you.

## Uninstalling the game

*Like any other application just follow the next instructions*

**T**o uninstall the game click on windows start button and then choose All Programs then choose Letters Kingdom and finally choose the executable uninstall letters kingdom.

## Getting Started

*You can start playing and having fun with your children now.*

**W**hen you start launching the application, you will find two video demos. The main screen will load. Start a new game by clicking New Game Menu item. You can also choose either to load a previously saved game or to exit the game.

You will start now playing in the fantasy environment.

## Playing the game

*We've tried to keep the default buttons similar to famous First Person Shooter Games*

**J**ust like all other famous FPS ( First Person Shooter ) games we tried to keep the buttons the same. You can move forward, backward, right and left using the default cursor buttons on your keyboard. Jump by pressing space meanwhile you have to direct yourself by using the mouse. Mouse left click to use the item you are carrying such as the axe. You can left item by clicking the right mouse button. In case you're stuck you can press the C button. Pressing Escape allows you to load the in-game menu from which you can also save your game, load you game or exit to the main menu.

You will start now playing in the fantasy environment.

## Controls Reference



*The following table contains a brief reference for the game buttons*

### Using Keyboard

Up Arrow	Move Forward
Down Arrow	Move Backward
Right Arrow	Strafe Right
Left Arrow	Strafe Left
Space	Jump
C	Crouch Down
Tab	Display Objectives
ESC	Show / Hide In game Menu
Shift	Run Mode



### Using Mouse

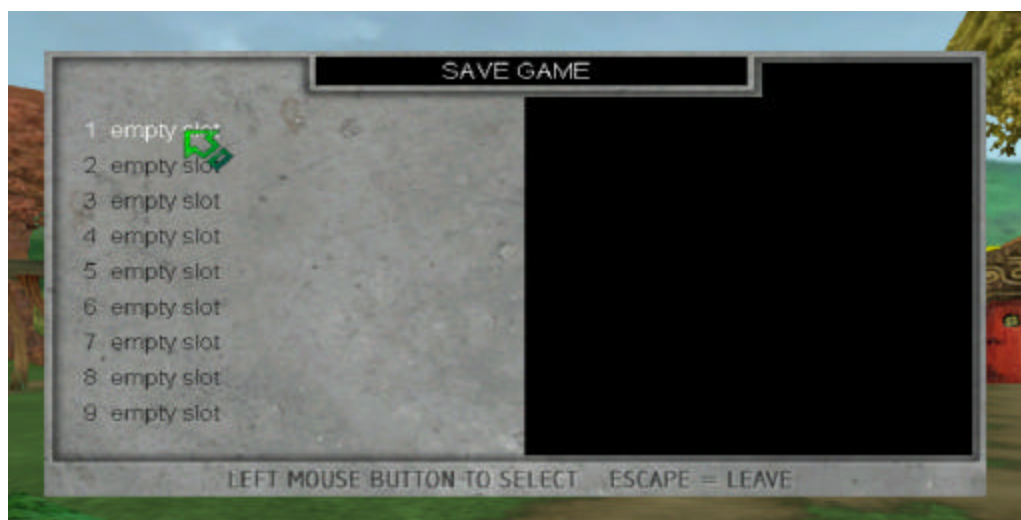
Left Click	Use Carried item
Right Click	Lift items
Movement	Direct your view

## Saving and Loading

*Using saving and loading menus allow u to keep a backup of your played levels.*

**Y**ou can save your current place and level by saving your game. You can also recall it back by loading it. To save a game just press the ESC button when you're playing and click on save menu option you will have to click then one of the empty slots that will appear.

You can also load any game either by choosing load menu from the main menu appearing when you launch the game or by pressing escape while you're playing. The in-game menu will appear allowing you to load any state you've saved before.



## Technical Support

*If you have trouble just read the following section*

If you've encountered any trouble you can just e-mail us at [support@letterskingdom.com](mailto:support@letterskingdom.com). We will try to reply to you as soon as we receive your mail.

Just make sure that the PC you are using meets the minimum requirements indicated on the box.

## Supported Graphics Cards

*This section lists all the supported graphics cards.*

Letters Kingdom supports almost all new integrated graphics cards such as Intel however it is better to you powerful graphics cards such as NVIDIA Graphics cards. You must make sure that your graphics cards memory is 64 MB or greater for smooth playing.

## DirectX Important Notes

*Read this note it is a very important note.*

DirectX latest version is very important for this game which means that if you have DirectX 9.0c you must update it either by using the installation CD or

by updating online from our website from the following link:

<http://www.letterskingdom.com/dxwebsetup.exe>

You can also update it from Microsoft website